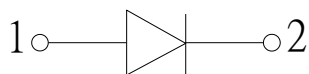
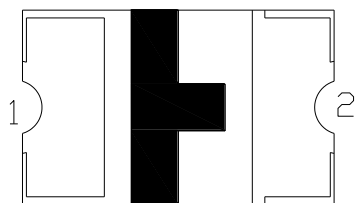
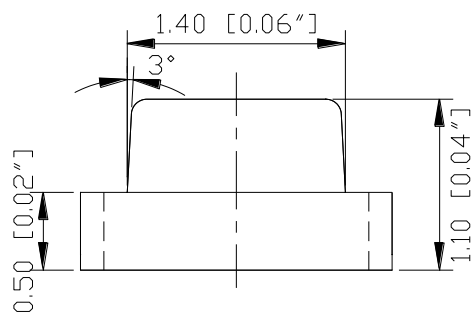
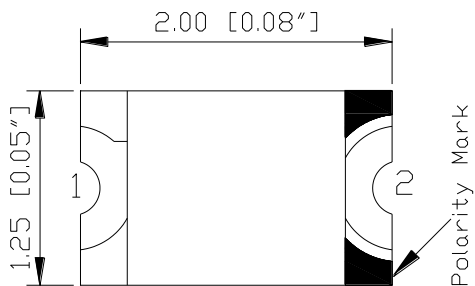


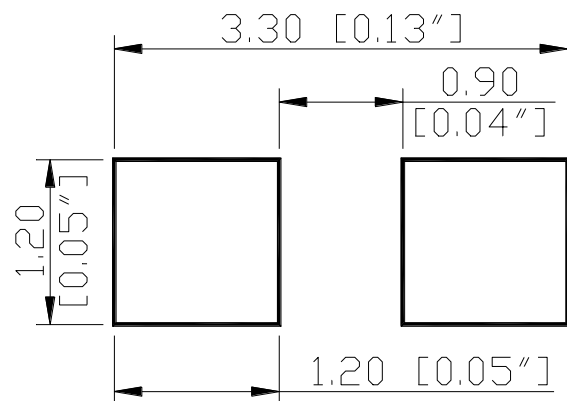
INFRARED EMITTING DIODE

Part Number: N0F31S86

Package outlines



RECOMMEND PAD LAYOUT



ITEM	MATERIALS
Resin (mold)	Epoxy
Lens color	Water transparent
Dice	AlGaAs/AlGaAs

NOTES:

- All dimensions are in millimeters (inches);
- Tolerances are $\pm 0.1\text{mm}$ (0.004inch) unless otherwise noted.

Rev :	Date	Drawn by :	Checked by :	Approved by :
A	2012/03/13	唐云	許媚鳳	黃靜文

INFRARED EMITTING DIODE

Part Number: N0F31S86

Absolute maximum ratings

(T_A=25°C)

Parameter	Symbol	Value	Unit
Power dissipation	Pd	90	mW
Peak forward current Pulse width 100μs, duty cycle =1%	I _{fp}	1	A
Continuous forward current	I _f	50	mA
Reverse voltage	V _r	5	V
Operating temperature range	T _{op}	-40 ~+80	°C
Storage temperature range	T _{stg}	-40 ~+85	°C

Electro-optical characteristics

(T_A=25°C)

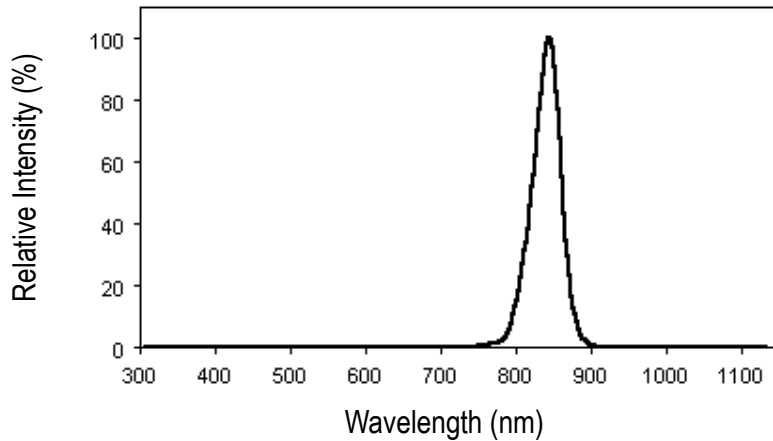
Parameter	Test Condition	Symbol	Value			Unit
			Min	Typ	Max	
Radiant incidence	I _f =20mA	I _e	0.10	0.70	1.60	mW/Sr
Forward voltage	I _f =20mA	V _f	1.00	1.40	1.80	V
Peak wavelength	I _f =20mA	λ _p	840	850	860	nm
Spectral bandwidth	I _f =20mA	Δλ	--	42	--	nm
View angle	I _f =10mA	2θ 1/2	--	140	--	Deg
Reverse current	V _r =5V	I _r	--	--	10	μA

INFRARED EMITTING DIODE

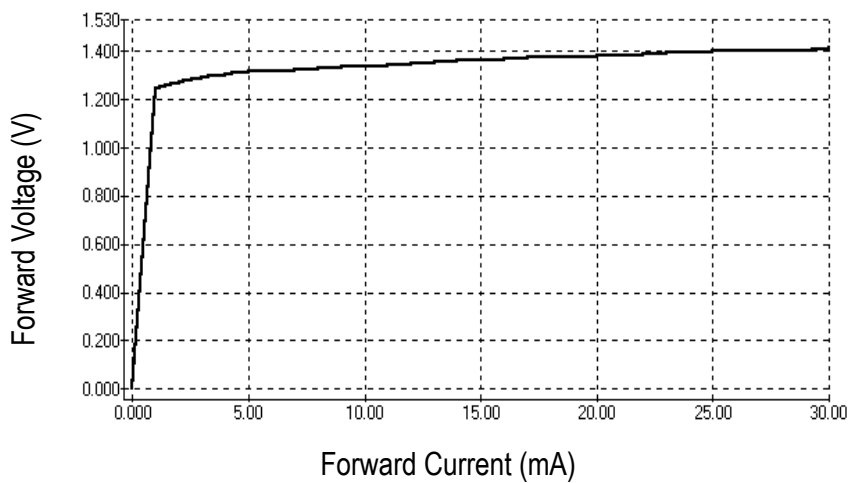
Part Number: N0F31S86

OPTICAL CHARACTERISTIC CURVES

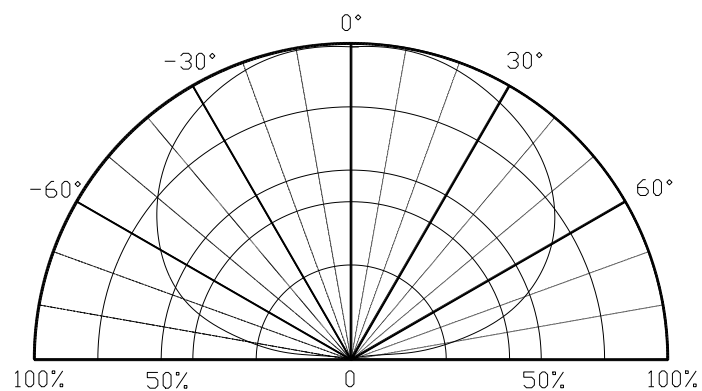
Relative Intensity vs. Wavelength



Forward Current vs. Forward Voltage



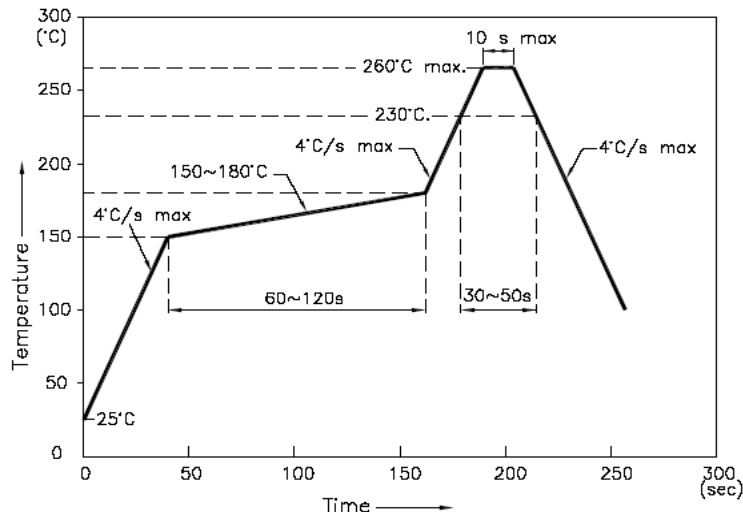
Directive Characteristics



SURFACE MOUNT LED LAMPS

Reflow Profile

■ Reflow Temp/Time



NOTES:

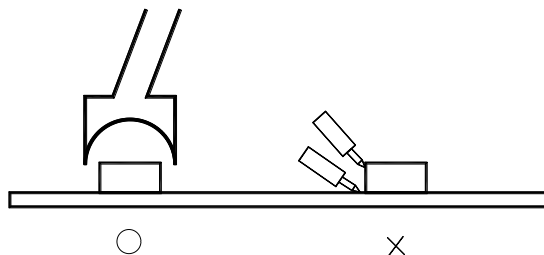
1. We recommend the reflow temperature $245^{\circ}\text{C} (\pm 5^{\circ}\text{C})$. the maximum soldering temperature should be limited to 260°C .
2. dont cause stress to the epoxy resin while it is exposed to high temperature.
3. Number of reflow process shall be 2 times or less.

■ Soldering iron

Basic spec is $\leq 5\text{sec}$ when 260°C . If temperature is higher, time should be shorter ($+10^{\circ}\text{C} \rightarrow -1\text{sec}$). Power dissipation of iron should be smaller than 20W, and temperatures should be controllable. Surface temperature of the device should be under 230°C .

■ Rework

1. Customer must finish rework within 5 sec under 260°C .
2. The head of iron can not touch copper foil
3. Twin-head type is preferred.

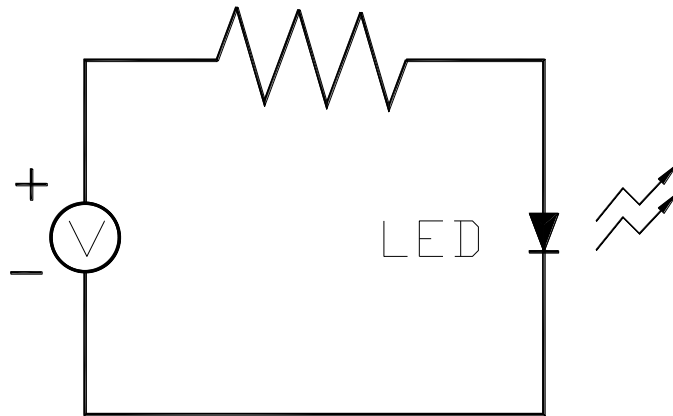


- Avoid rubbing or scraping the resin by any object, during high temperature, for example reflow 、 solder etc.

INFRARED EMITTING DIODE

Test circuit and handling precautions

■ Test circuit



■ Handling precautions

1. Over-current-proof

Customer must apply resistors for protection; otherwise slight voltage shift will cause big current change (Burn out will happen).

2.Storage

2.1 It is recommended to store the products in the following conditions:

Humidity: 60% R.H. Max.

Temperature : 5°C~30°C(41°F~86°F)

2.2 Shelf life in sealed bag: 12 month at < 5°C~30°C and < 30% R.H. after the package is Opened, the products should be used within a week or they should be keeping to stored at ≤ 20 R.H. with zip-lock sealed.

3.Baking

It is recommended to baking before soldering when the pack is unsealed after 72hrs. The Conditions are as followings:

3.1 $60\pm 3^{\circ}\text{C}$ x(12~24hrs) and < 5%RH, taped reel type

3.2 $100\pm 3^{\circ}\text{C}$ x(45min~1hr), bulk type

3.3 $130\pm 3^{\circ}\text{C}$ x(15~30min), bulk type

INFRARED EMITTING DIODE

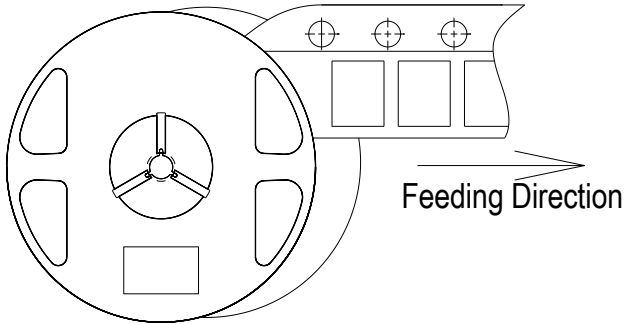
Test items and results of reliability

Type	Test Item	Test Conditions	Note	Number of Damaged
Environmental Sequence	Temperature Cycle	-20°C 30min ↑ ↓ 80°C 30min	100 cycle	0/22
	Thermal Shock	-20°C 15min ↑ ↓ 80°C 15min	100 cycle	0/22
	High Humidity Heat Cycle	30°C ↔ 65°C 90%RH 24hrs/1cycle	10 cycle	0/22
	High Temperature Storage	T _a =80°C	1000 hrs	0/22
	Humidity Heat Storage	T _a =60°C RH=90%	1000 hrs	0/22
	Low Temperature Storage	T _a =-30°C	1000 hrs	0/22
Operation Sequence	Life Test	T _a =25°C I _F =20mA	1000 hrs	0/22
	High Humidity Heat Life Test	60°C RH=90% I _F =10mA	500 hrs	0/22
	Low Temperature Life Test	T _a =-20°C I _F =20mA	1000 hrs	0/22

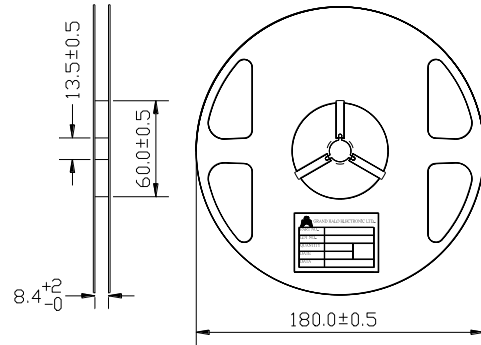
PACKAGING SPECIFICATIONS

S170 Series SMD Chip LED Lamps Packaging Specifications

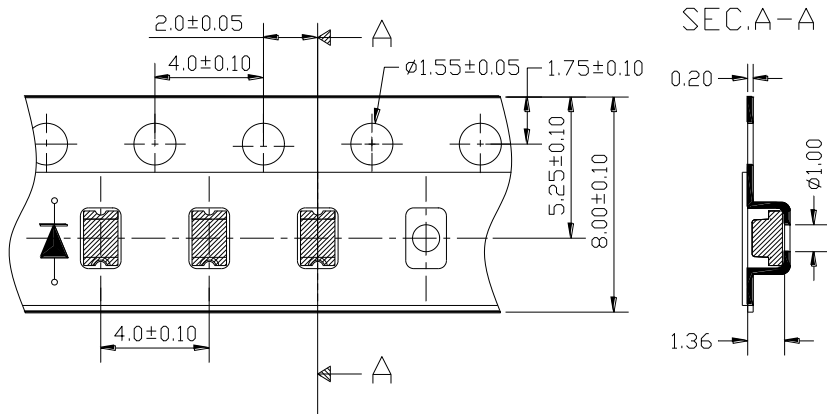
● Feeding Direction



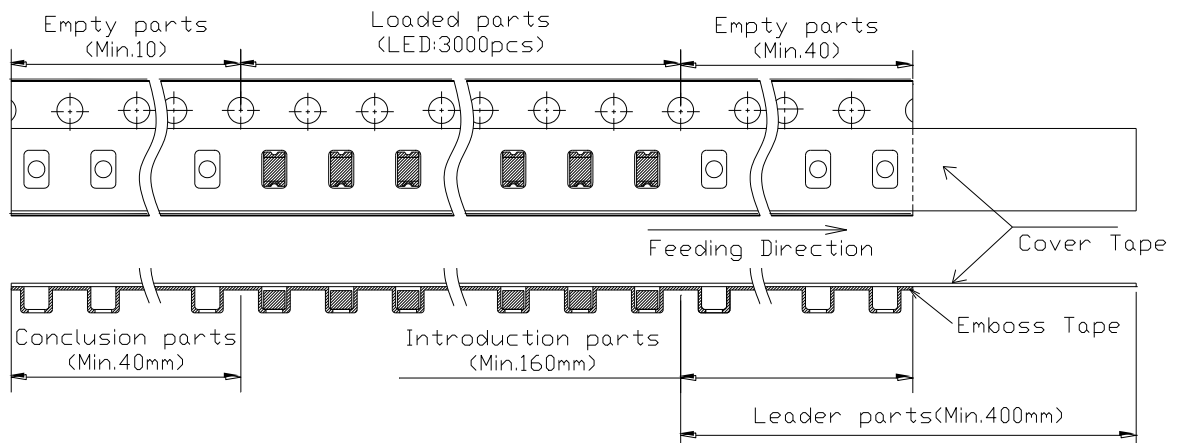
● Dimensions of Reel (Unit: mm)



● Dimensions of Tape (Unit: mm)



● Arrangement of Tape



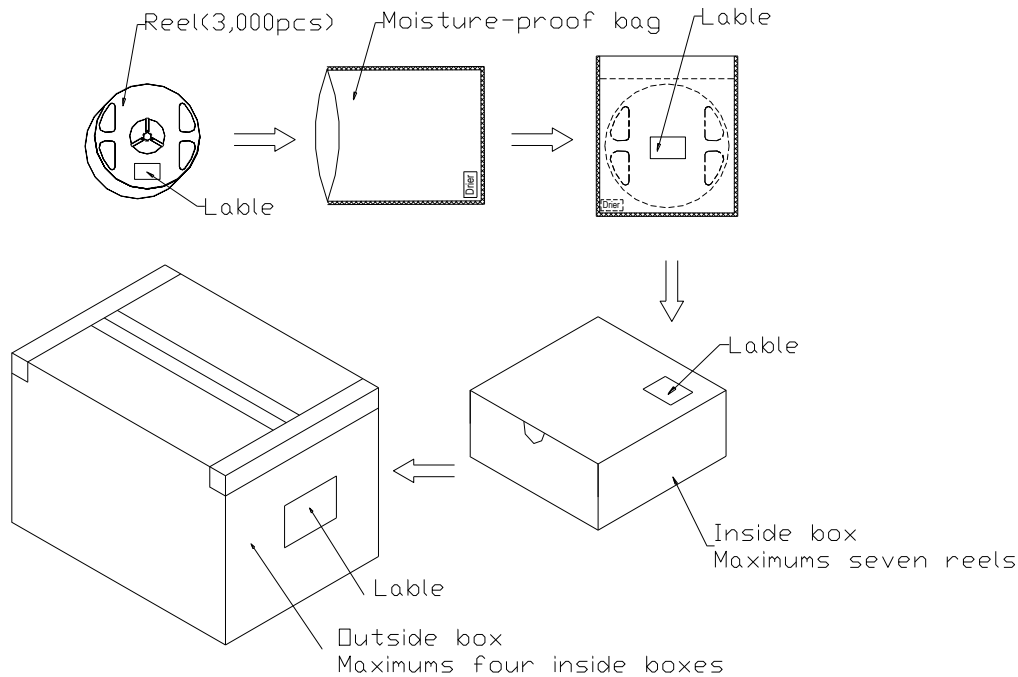
NOTES

1. Empty component pockets are sealed with top cover tape;
2. The maximum number of missing lamps is two;
3. The cathode is oriented towards the tape sprocket hole in accordance with ANSI/EIA RS-481 specifications.
4. 3,000 pcs/Reel

PACKAGING SPECIFICATIONS

S170 Series SMD Chip LED Lamps Packaging Specifications

- Packaging specifications



NOTES:

Reeled products (numbers of products are 3,000pcs) packed in a seal off moisture-proof bag along with a desiccant one by one, Seven moisture-proof bag of maximums (total maximum number of products are 21,000pcs) packed in an inside box (size: about 238mm x about 194mm x about 102mm) and four inside boxes of maximums are put in the outside box (size: about 410mm x about 254mm x about 229mm) Together with buffer material, and it is packed. (Part No., Lot No., quantity should appear on the label on the moisture-proof bag, part No. And quantity should appear on the label on the cardboard box.) The number of the loading steps of outside box (cardboard box) has it to three steps.

INFRARED EMITTING DIODE

Part Number: N0F31S86

Forward Voltage Rank Combination (IF=20mA)

Rank	Min.	Max.	Unit
<input type="checkbox"/>	1.00	1.80	V

Radiant Intensity Rank Combination (IF=20mA)

Rank	Min.	Max.	Unit
A	0.10	0.60	mW/sr
B	0.60	1.10	
C	1.10	1.60	

Peak wavelength Rank Combination (IF=20mA)

Rank	Min.	Max.	Unit
<input type="checkbox"/>	840	860	nm

Group Name on Label (Example DATA: B 20)

DATA: <input type="checkbox"/> B <input type="checkbox"/> 20	Vf(V)	Ie (mW/Sr)	λ_p (nm)	Test Condition
<input type="checkbox"/> →B→ <input type="checkbox"/> →20	1.00~1.80	0.60~1.10	840~860	IF=20mA

※ NOTE:

1. The tolerance of Radiant incidence (Ie) is $\pm 15\%$.
2. The tolerance of Peak wavelength is $\pm 1\text{nm}$.
3. This specification is preliminary.