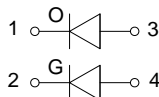
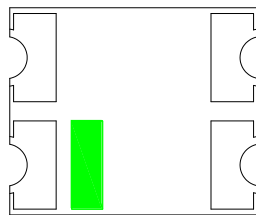
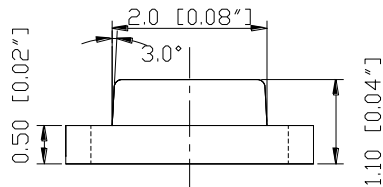
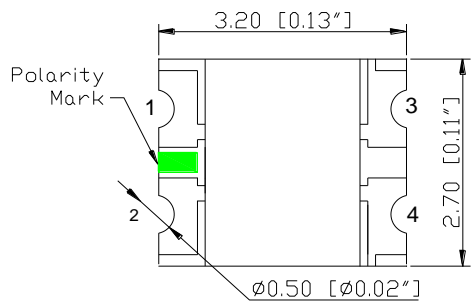



SURFACE MOUNT LED LAMPS

3155 Series SMD Chip LED Lamps

Part Number: N0D17S93

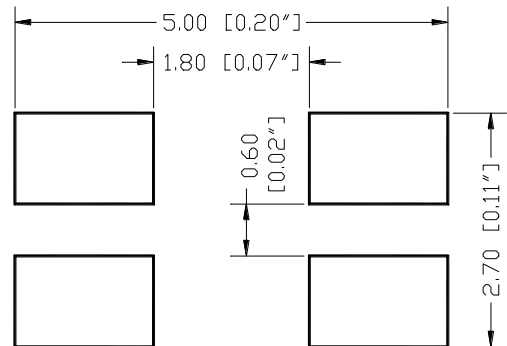
Package outlines





ATTENTION
OBSERVE PRECAUTIONS
FOR HANDLING
ELECTROSTATIC
SENSITIVE DEVICES

RECOMMEND PAD LAYOUT



ITEM		MATERIALS
Resin (mold)		Epoxy
Lens color		Water transparent
Dice	Orange	AlGaInP
	Green	AlGaInP

NOTES:

1. All dimensions are in millimeters (inches);
2. Tolerances are $\pm 0.1\text{mm}$ (0.004inch) unless otherwise noted.

Rev :	Date	Drawn by :	Checked by :	Approved by :
A	2011/11/30	李梅英	許媚鳳	黃靜文

SURFACE MOUNT LED LAMPS

Part Number: N0D17S93

Absolute maximum ratings (T_A=25°C)

Parameter	Symbol	Value		Unit
		O	G	
Power dissipation	Pd	75	75	mW
Forward current	I _f	30		mA
Reverse voltage	V _r	5		V
Operating temperature range	T _{op}	-40 ~+80		°C
Storage temperature range	T _{stg}	-40 ~+85		°C
Peak pulsing current (1/8 duty f=1kHz)	I _{fp}	125		mA

Electro-optical characteristics (T_A=25°C)

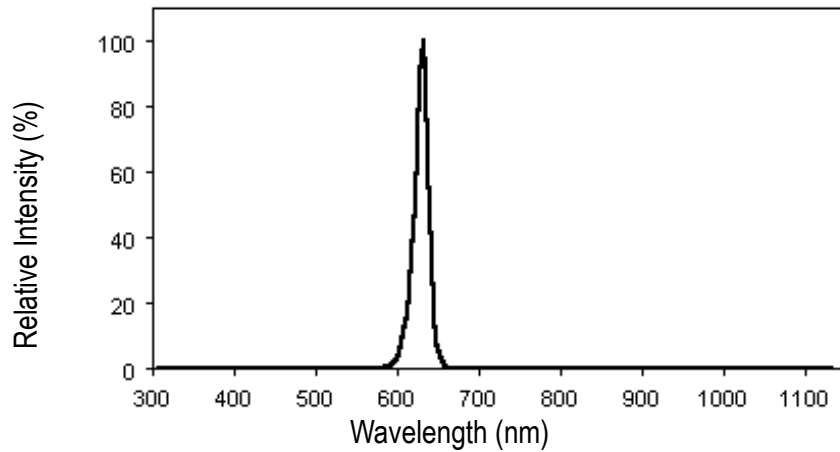
Parameter	Test Condition	Symbol	Value			Unit
			Min	Typ	Max	
Wavelength at peak emission	I _f =20mA	λ _{peak} O	--	630	--	nm
		G	--	572	--	
Spectral half bandwidth	I _f =20mA	Δλ O	--	18	--	nm
		G	--	16	--	
Dominant wavelength	I _f =20mA	λ _{dom} O	615	625	630	nm
		G	565	570	576	
Forward voltage	I _f =20mA	V _f O	1.7	2.0	2.5	V
		G	1.7	2.0	2.5	
Luminous intensity	I _f =20mA	I _v O	80	160	250	mcd
		G	32	55	100	
Viewing angle at 50% I _v	I _f =10mA	2θ _{1/2}	--	140	--	Deg
Reverse current	V _r =5V	I _r	--	--	10	μA

SURFACE MOUNT LED LAMPS

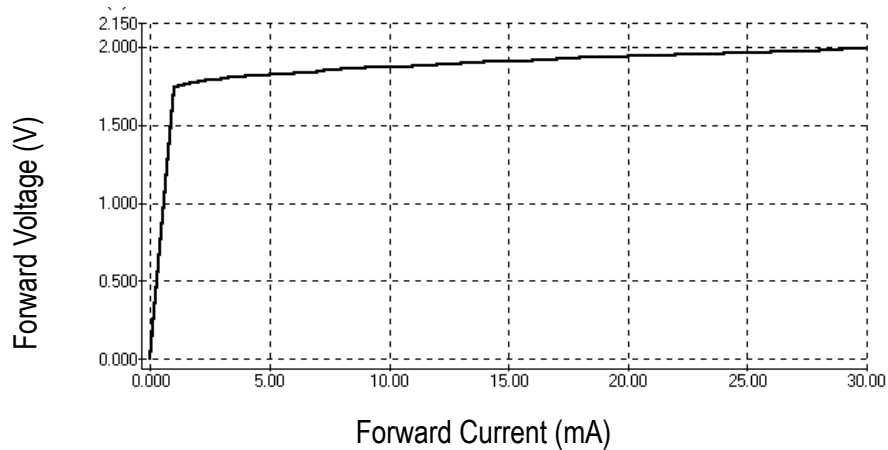
Part Number: N0D17S93

OPTICAL CHARACTERISTIC CURVES (Orange)

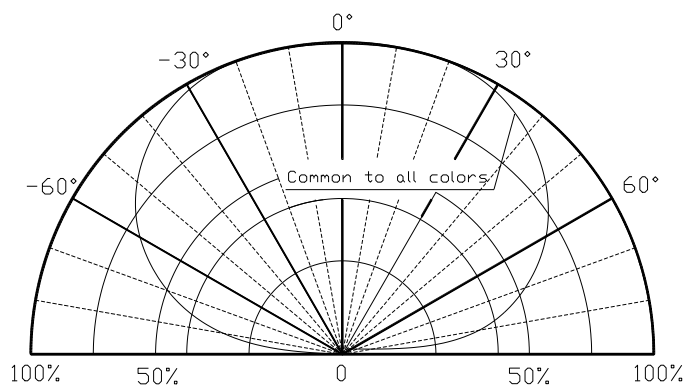
Relative Intensity vs. Wavelength



Forward Current vs. Forward Voltage



Directive Characteristics

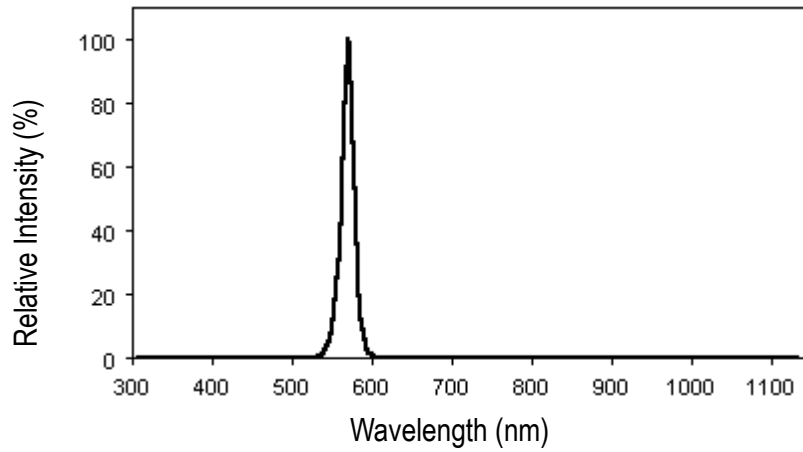


SURFACE MOUNT LED LAMPS

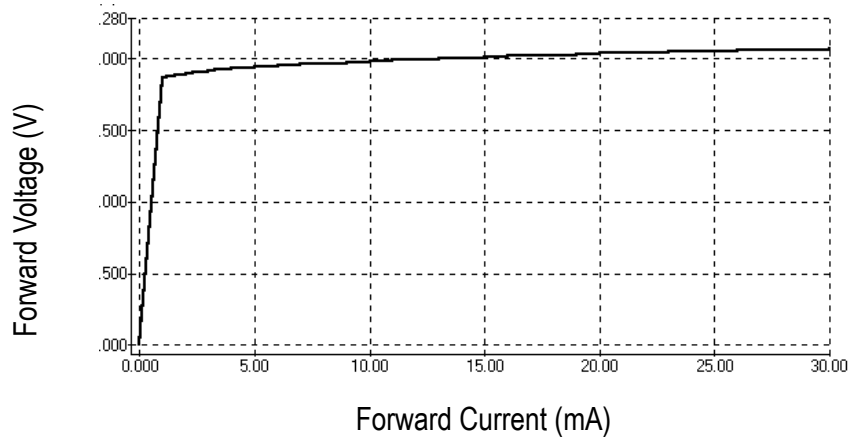
Part Number: N0D17S93

OPTICAL CHARACTERISTIC CURVES (Green)

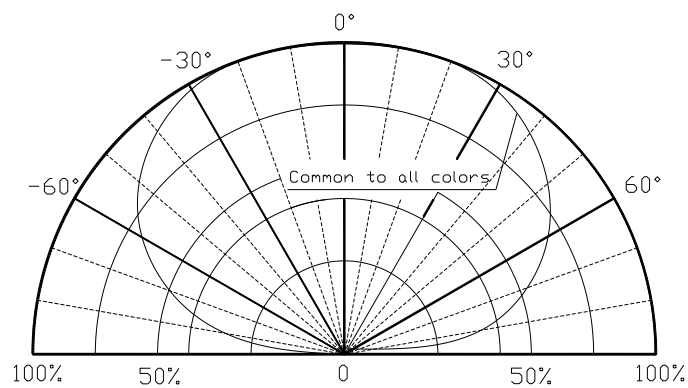
Relative Intensity vs. Wavelength



Forward Current vs. Forward Voltage



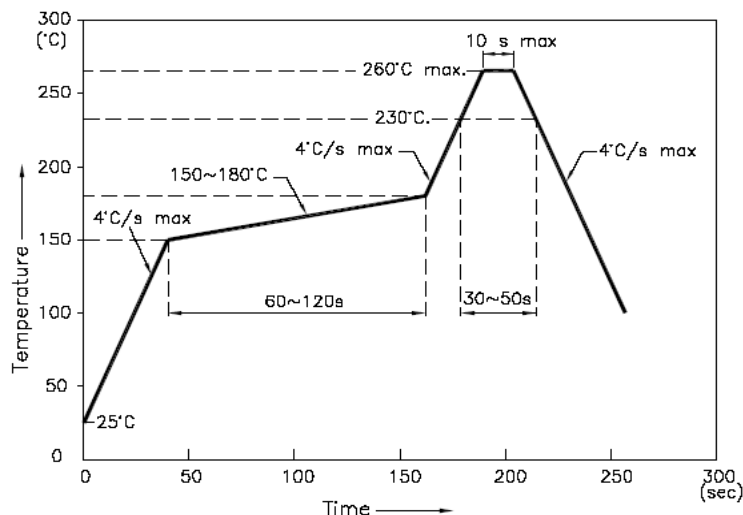
Directive Characteristics



SURFACE MOUNT LED LAMPS

Reflow Profile

■ Reflow Temp/Time



NOTES:

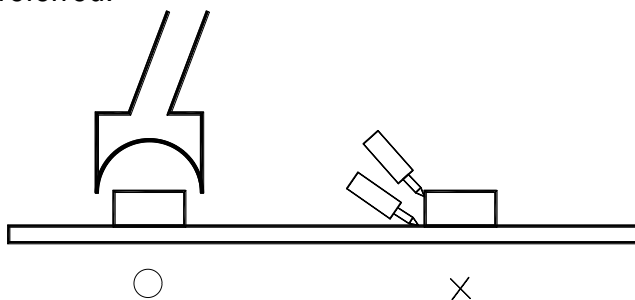
1. We recommend the reflow temperature 245°C ($\pm 5^\circ\text{C}$). the maximum soldering temperature should be limited to 260°C.
2. dont cause stress to the epoxy resin while it is exposed to high temperature.
3. Number of reflow process shall be 2 times or less.

■ Soldering iron

Basic spec is $\leq 5\text{sec}$ when 260°C. If temperature is higher, time should be shorter (+10°C \rightarrow -1sec). Power dissipation of iron should be smaller than 20W, and temperatures should be controllable. Surface temperature of the device should be under 230°C.

■ Rework

1. Customer must finish rework within 5 sec under 260°C.
2. The head of iron can not touch copper foil
3. Twin-head type is preferred.

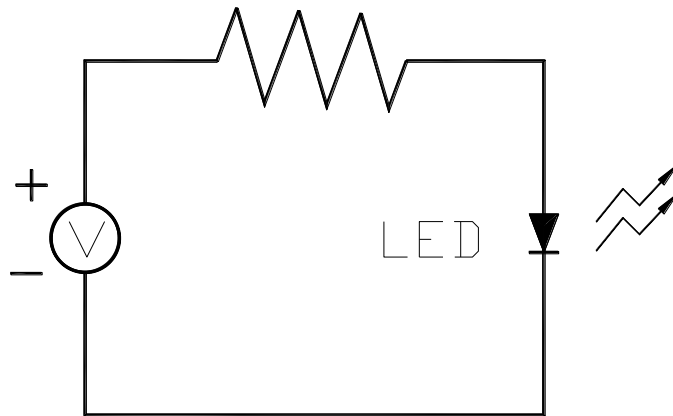


■ Avoid rubbing or scraping the resin by any object, during high temperature, for example reflow、solder etc.

SURFACE MOUNT LED LAMPS

Test circuit and handling precautions

■ Test circuit



■ Handling precautions

1. Over-current-proof

Customer must apply resistors for protection; otherwise slight voltage shift will cause big current change (Burn out will happen).

2.Storage

2.1 It is recommended to store the products in the following conditions:

Humidity: 60% R.H. Max.

Temperature : 5°C~30°C(41°F~86°F)

2.2 Shelf life in sealed bag: 12 month at < 5°C~30°C and < 30% R.H. after the package is Opened, the products should be used within a week or they should be keeping to stored at ≤ 20 R.H. with zip-lock sealed.

3.Baking

It is recommended to baking before soldering when the pack is unsealed after 72hrs. The Conditions are as followings:

3.1 $60 \pm 3^\circ\text{C}$ x(12~24hrs) and < 5%RH, taped reel type

3.2 $100 \pm 3^\circ\text{C}$ x(45min~1hr), bulk type

3.3 $130 \pm 3^\circ\text{C}$ x(15~30min), bulk type

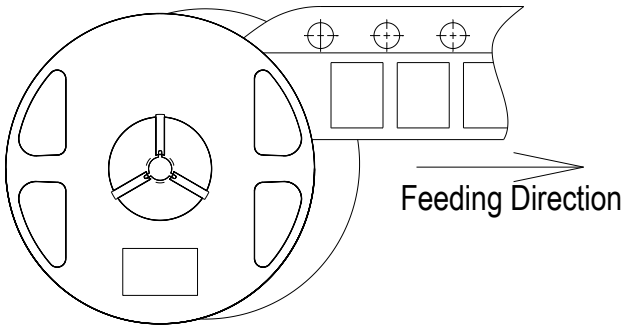
SURFACE MOUNT LED LAMPS

Test items and results of reliability

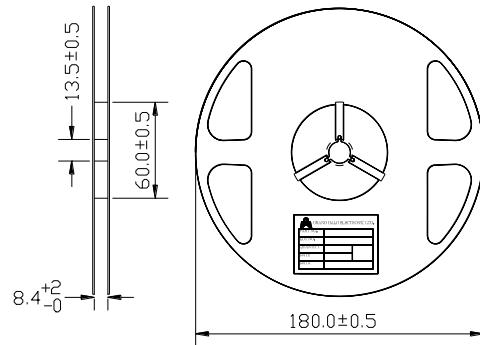
Type	Test Item	Test Conditions	Note	Number of Damaged
Environmental Sequence	Temperature Cycle	-20°C 30min ↑ ↓ 80°C 30min	100 cycle	0/22
	Thermal Shock	-20°C 15min ↑ ↓ 80°C 15min	100 cycle	0/22
	High Humidity Heat Cycle	30°C ↔ 65°C 90%RH 24hrs/1cycle	10 cycle	0/22
	High Temperature Storage	T _a =80°C	1000 hrs	0/22
	Humidity Heat Storage	T _a =60°C RH=90%	1000 hrs	0/22
	Low Temperature Storage	T _a =-30°C	1000 hrs	0/22
Operation Sequence	Life Test	T _a =25°C I _F =20mA	1000 hrs	0/22
	High Humidity Heat Life Test	60°C RH=90% I _F =10mA	500 hrs	0/22
	Low Temperature Life Test	T _a =-20°C I _F =20mA	1000 hrs	0/22

3155 Series SMD Chip LED Lamps Packaging Specifications

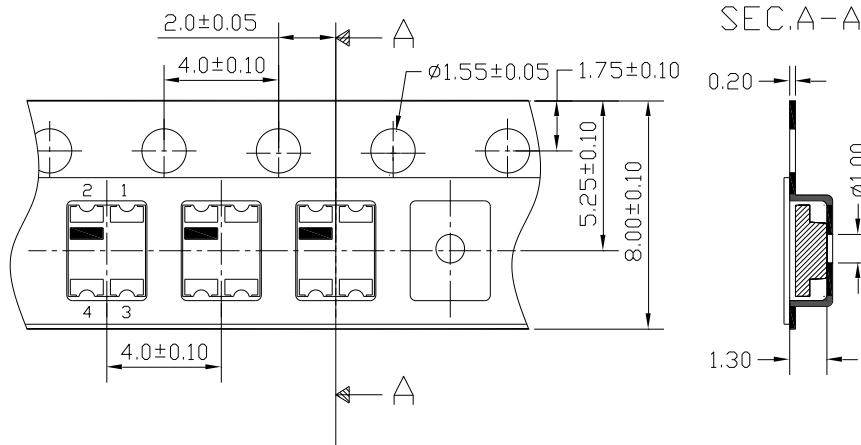
● Feeding Direction



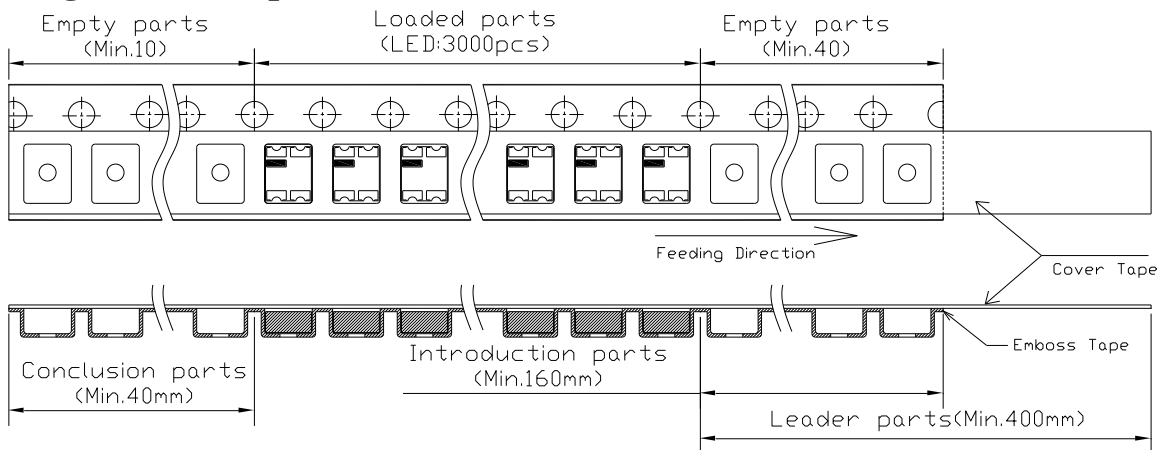
● Dimensions of Reel (Unit: mm)



● Dimensions of Tape (Unit: mm)



● Arrangement of Tape

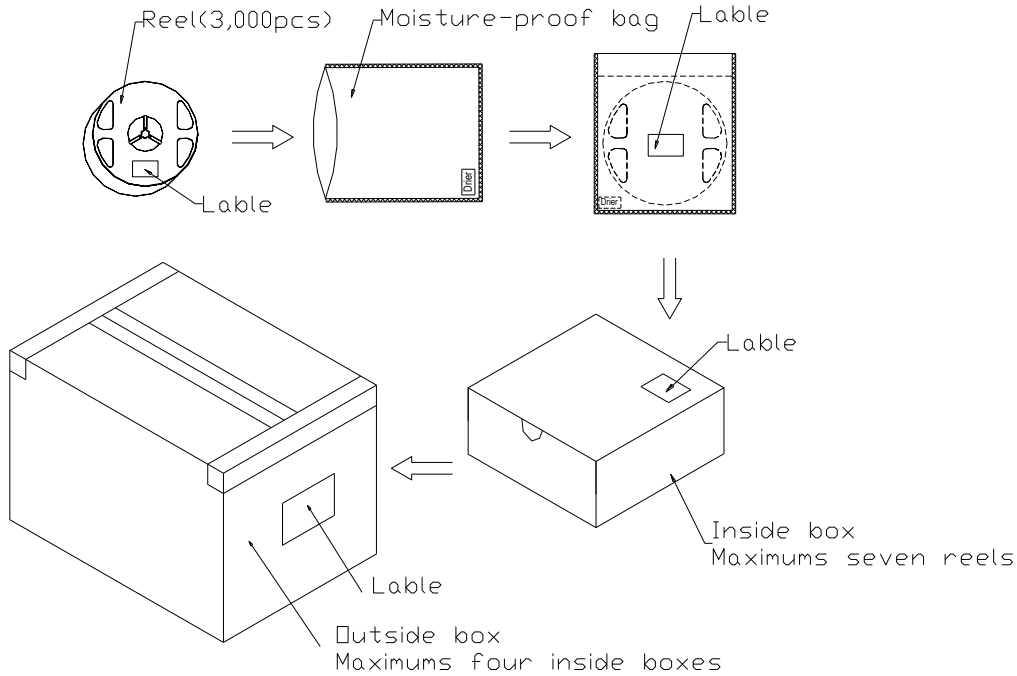


NOTES

1. Empty component pockets are sealed with top cover tape;
2. The maximum number of missing lamps is two;
3. The polarity mark is oriented towards the tape sprocket hole ;
4. 3,000pcs/Reel.

3155 Series SMD Chip LED Lamps Packaging Specifications

- Packaging specifications



NOTES:

Reeled products (numbers of products are 3,000 pcs) packed in a seal off moisture-proof bag along with a desiccant one by one, Seven moisture-proof bag of maximums (total maximum number of products are 21,000 pcs) packed in an inside box (size: about 238mm x about 194mm x about 102mm) and four inside boxes of maximums are put in the outside box (size: about 410mm x about 254mm x about 229mm) Together with buffer material, and it is packed. (Part No., Lot No., quantity should appear on the label on the moisture-proof bag, part No. And quantity should appear on the label on the cardboard box.) The number of the loading steps of outside box (cardboard box) has it to three steps.

SURFACE MOUNT LED LAMPS

Part Number: N0D17S93

Forward Voltage Rank Combination (IF=20mA)

Rank		Min.	Max.	Unit
Orange	<input type="checkbox"/>	1.7	2.5	V
Green	<input type="checkbox"/>	1.7	2.5	

Luminous Intensity Rank Combination (IF=20mA)

Rank		Min.	Max.	Unit
Orange	I	80	100	mcd
	J	100	125	
	K	125	160	
	L	160	200	
	M	200	250	
Green	E	32	40	
	F	40	50	
	G	50	63	
	H	63	80	
	I	80	100	

Dominant wavelength Rank Combination (IF=20mA)

Rank		Min.	Max.	Unit
Orange	s	615	620	nm
	t	620	625	
	u	625	630	
Green	h	565	568	
	i	568	572	
	j	572	576	

Group Name on Label (Example DATA: Lt Gi 20)

DATA: <input type="checkbox"/> Lt Orange	<input type="checkbox"/> Gi 20 Green	Vf(V)	Iv (mcd)	λ_d (nm)	Test Condition
Orange	<input type="checkbox"/> →L→t→20	1.7~2.5	160~200	620~625	IF=20mA
Green	<input type="checkbox"/> →G→i→20	1.7~2.5	50~63	568~572	

* NOTE:

1. The tolerance of luminous intensity (Iv) is $\pm 15\%$.
2. The tolerance of dominant wavelength is $\pm 1\text{nm}$.
3. This specification is preliminary.