

# Photointerrupter

## Model No: LBT-136W

### Features

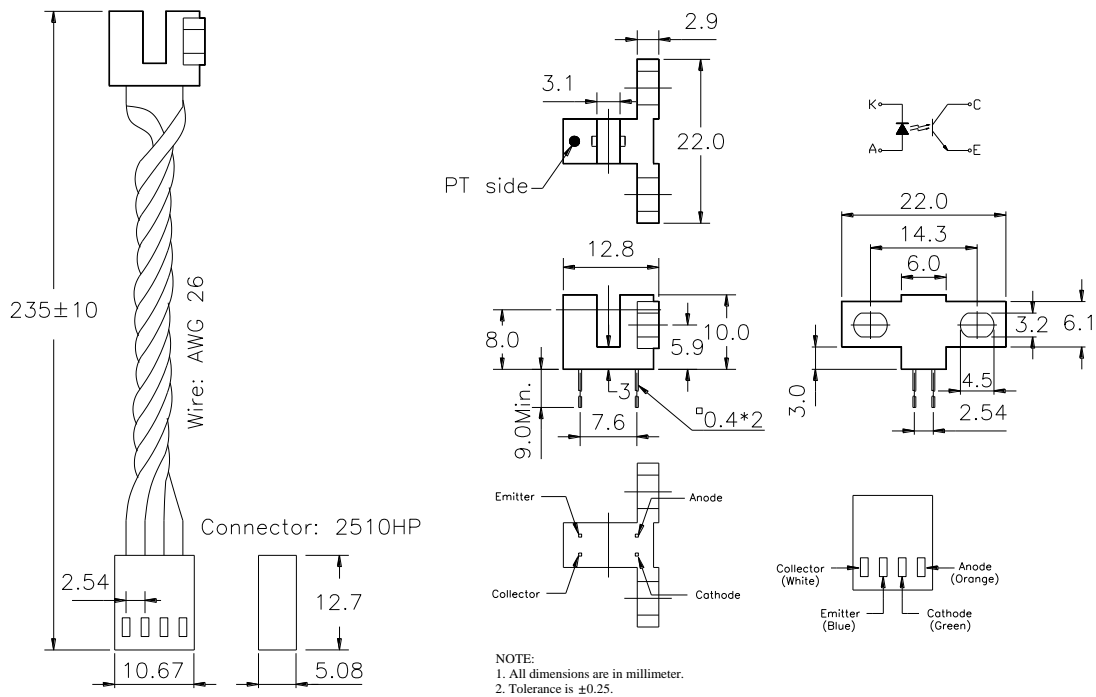
- High sensing accuracy (Slit width: 0.5mm)
- Both-side mounting type

### Applications

- Copiers, printers, facsimiles
- Optoelectronic switches

### Outline Dimensions

(Unit: mm)



Model No. LBT-136W

**Absolute Maximum Ratings** (Ambient Temperature: 25°C)

Item		Symbol	Rating	Units	Note
Input	Forward current	IF	50	mA	
	Reverse voltage	VR	5	V	
	Power dissipation	PD	75	mW	
Output	Collector-emitter voltage	Vceo	30	V	
	Emitter-collector voltage	Veco	5	V	
	Collector power dissipation	PC	80	mW	
Storage Temperature		Tstg	-40 to +100	°C	
Operating Temperature		Top	-25 to +85	°C	
Soldering Temperature		Tsol	260	°C	10 seconds max.

**Electrical Specifications** (Ambient Temperature: 25°C)

Item		Symbol	Min.	Typ.	Max.	Units	Conditions
Input	Forward voltage	VF		1.2	1.4	V	IF=20mA
	Peak forward voltage	VFM		3	4	V	IFM=0.5A
	Reverse current	IR			10	μA	VR=5V
	Peak wavelength	λp			940	nm	
Output	Collector dark current	Iceo		5	100	nA	Vce=24V, IF=0
	Collector-emitter breakdown voltage	BVceo	30			V	Ice=50μA
	Emitter-collector breakdown voltage	BVeco	4.5			V	Iec=50μA
Combination	Collector current	Ic	2.0			mA	Vce=5V, IF=20mA
	Collector-emitter saturation voltage	Vce(sat)			0.4	V	IF=20mA, Ic=1mA
	Response time	Tr/tf	10			μs	IF=5mA, Vcc=5V, RL=100Ω

# Reference Data

